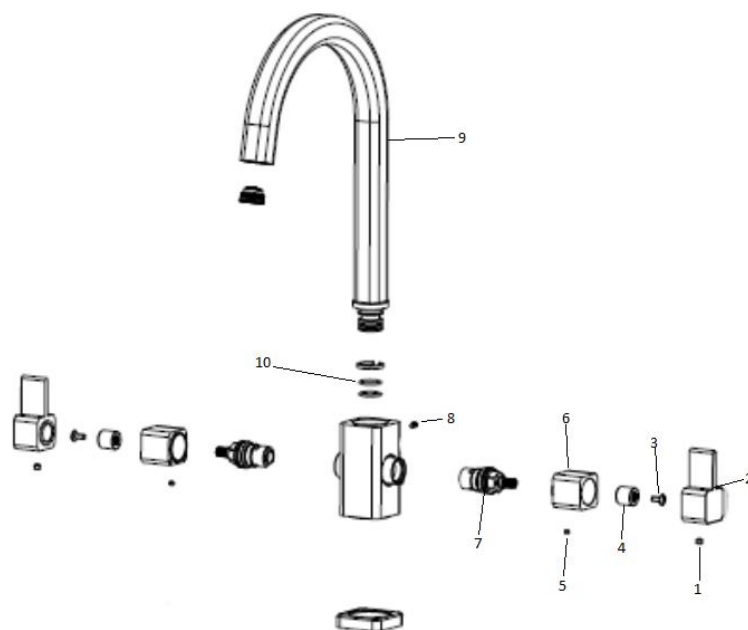


Carron Phoenix Bali Tap

Replacing Cartridges & O Rings

Replacing the Cartridge

Before replacing the cartridge, you will need to turn the water off. You will first need to remove the handle retaining screw (1) by using a 2.5mm allen key. You will then be able to remove the handle (2). You will then need a crosshead screwdriver to remove the brass screw (3) holding the brass handle insert (4) onto the valve. Once this is removed, you can undo the valve cover retaining screw (5) with a 2.5mm allen key and then unscrew the valve cover (6). You will then be able to remove the valve (7) by using an adjustable spanner and fit the replacement parts.



Replacing the O-Rings

You will first need to unscrew the spout retaining screw (8) by using a 2.5mm allen key. You can then lift the spout (9) up and replace the o rings (10) at the base with the new parts.